



Mouse anti Cytokeratin (Pan) Monoclonal Antibody

Alternative Name(s): nan

Order Information

- **Description:** Cytokeratin (Pan)
- **Catalogue:** 605-330
- **Lot:** See label
- **Size:** 100ug/200ul
- **Host:** Mouse
- **Clone:** PanCK-C11
- **Application:** IHC(P)
- **Reactivity:** Hu

ANTIGEN PREPARATION

A synthetic peptide of Cytokeratin (Pan)

BACKGROUND

Keratins are intermediate filament-forming proteins that provide mechanical support and fulfill a variety of additional functions in epithelial cells. Keratinocytes, the main cells of the epidermis, play a special role in sensing epidermal barrier and regulating immune homeostasis. Its functions mainly depend on structural proteins including keratins. Cytokeratins are forms of keratins found in the intracytoplasmic cytoskeleton of epithelial tissue. In the cytoplasm, the keratin filaments conform a complex network which extends from the surface of the nucleus to the cell membrane. Expression of cytokeratins within epithelial cells is largely specific to particular organs or tissues. Pan cytokeratin stains both low molecular weight and high molecular weight cytokeratins in all epithelia

PURIFICATION

The mouse IgG is purified by Protein A-Affinity Chromatography according to Isotyping

FORMULATION

This affinity purified antibody is supplied in sterile Phosphatebuffered saline (pH7.2) containing antibody stabilizer

SPECIFICITY

This antibody recognizes human Cytokeratin (Pan) protein. The other species are not tested.

STORAGE

The antibodies are stable for 24 months from date of receipt when stored at -20oC to -70oC. The antibodies can be stored at 2oC-8oC for three month without detectable loss of activity. Avoid repeated freezing-thawing cycles.

APPLICATIONS/SUGGESTED WORKING DILUTIONS*

- Western Blot: 0.1-1 µg/ml
- ELISA: 0.01-0.1 µg/ml
- Immunoprecipitation: 2-5 µg/ml
- IHC: 2-10 µg/ml
- Flow cytometry: Not tested
- Molecular Weight: 68.0
- Positive Control: Kidney Tissue
- Cellular Location: Cell Membrane

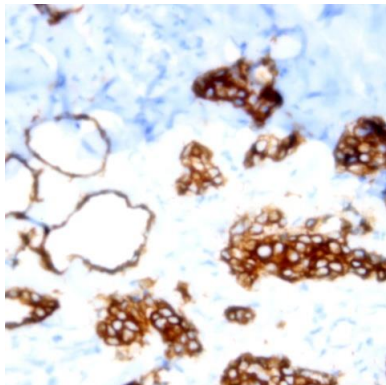
*Optimal dilutions should be determined by researchers for the specific applications.

FOR RESEARCH USE ONLY.

AbboMax, Inc 2528 Qume Drive, Suite 8, San Jose, California 95131, USA
1 408-573-1898 (Tel). 1 408-573-1858 (Fax). www.abbomax.com info@abbomax.com



DATA ATTACHMENTS



Immunohistochemistry: Human breast carcinoma (FFPE) stained with Mouse anti-Cytokeratin (Pan) (Cat# 605-330) at 1:200 for 10 min @ RT. Staining of formalin-fixed tissue requires boiling tissue sections in 10 mM Citrate Buffer, pH 6.0 for 10 min followed by cooling at RT for 20 min.

REFERENCES

FOR RESEARCH USE ONLY.

AbboMax, Inc 2528 Qume Drive, Suite 8, San Jose, California 95131, USA
1 408-573-1898 (Tel). 1 408-573-1858 (Fax). www.abbomax.com info@abbomax.com